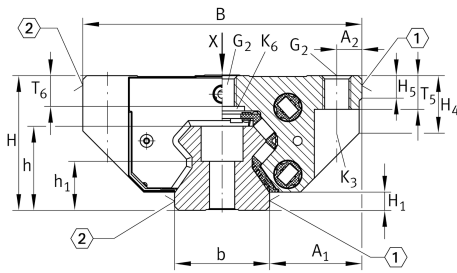


RWU35-F-L

循环滚子轴承滑块

带满装循环滚珠导引系统的标准滑块, 用于直线循环滚珠轴承和导轨组件, 用于油润滑或脂润滑

技术信息

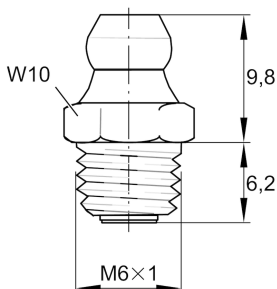
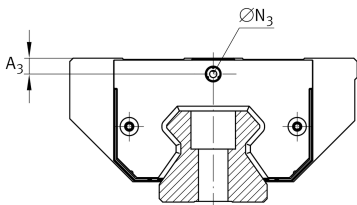
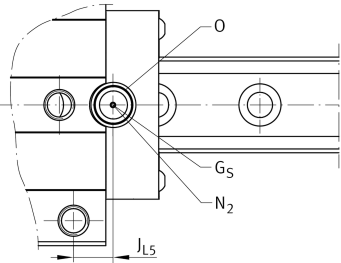
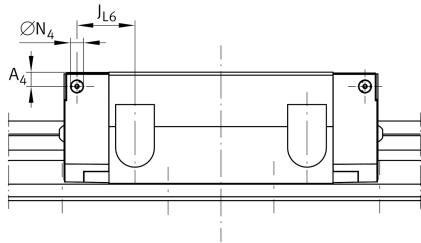
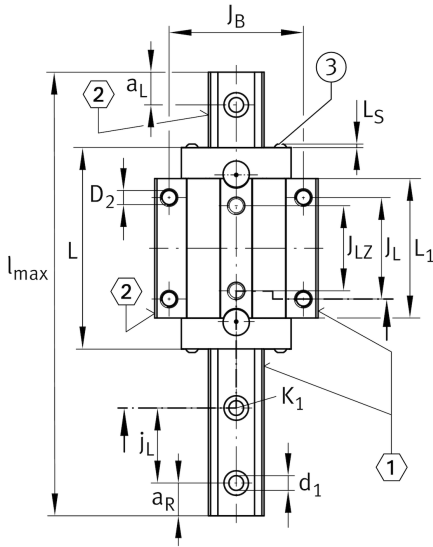


主要尺寸和性能数据

H	48 mm	height system
B	100 mm	width carriage
L	148.8 mm	overall length carriage
C	70,000 N	dynamic load rating
C ₀	175,000 N	dynamic load rating
M _{0x}	1,500 Nm	static moment rating about X axis
M _{0y}	3,350 Nm	static moment rating about Y axis
M _{0z}	3,000 Nm	static moment rating about Z axis
≈m	2.29 kg	重量



安装尺寸



A ₁	33 mm	Distance from locating edge on carriage to locating edge on guideway
J _B	82 mm	
b	34 mm	width rail
A ₂	9 mm	Distance from locating edge to hole
L ₁	111 mm	
L _S	2.2 mm	
J _L	62 mm	
J _{LZ}	52 mm	
H ₁	6.5 mm	Free space, system dimension
H ₄	20.5 mm	
H ₅	8 mm	
T ₅	12 mm	Thread depth
T ₆	10.9 mm	
G ₂	M10	fixing screws below (DIN ISO 4762-12.9)
G ₂ M _A	41 Nm	maximum tightening torque
K ₃	M8	fixing screws below (DIN ISO 4762-12.9)
K ₃ M _A	41 Nm	maximum tightening torque
K ₆	M8	fixing screws below (DIN 7984-8.8)
K ₆ M _A	24 Nm	maximum tightening torque
D ₂	8.6 mm	bore diameter
A ₃	6.6 mm	position lubrication connector
N ₃	M6	lubrication connector
t N ₃	6 mm	maximum permissible screw depth for lubrication connectors
A ₄	5.6 mm	position lubrication connector
N ₄	6 mm	lubrication connector
t N ₄	6 mm	maximum permissible screw depth for lubrication connectors
J _{L6}	37.4 mm	position lubrication connector
N ₂	6 mm	max. diameter of lubrication hole in adjacent construction
J _{L5}	27.2 mm	position lubrication connector
G _S	M4x4	
O	10x1,5	O-Ring DIN 3771



在 medias 上檢視產品詳細資料

17.10.2024, 15:01:05 CST

SCHAEFFLER

