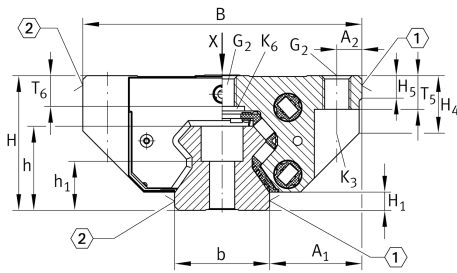


RWU45-F

循环滚子轴承滑块

带满装循环滚珠导引系统的标准滑块, 用于直线循环滚珠轴承和导轨组件, 用于油润滑或脂润滑

技术信息

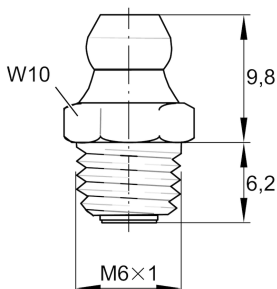
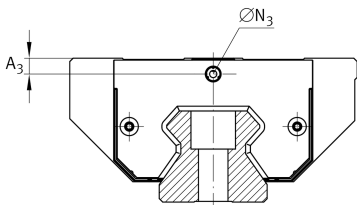
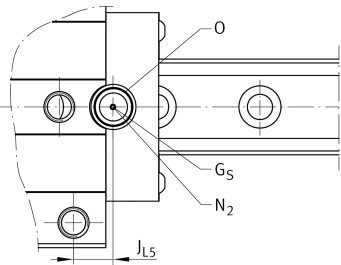
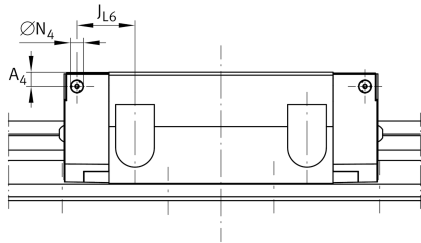
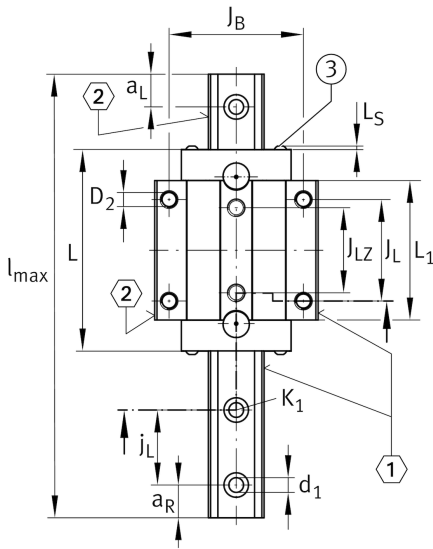


主要尺寸和性能数据

| | | |
|-----------------|-----------|-----------------------------------|
| H | 60 mm | height system |
| B | 120 mm | width carriage |
| L | 145.9 mm | overall length carriage |
| C | 92,000 N | dynamic load rating |
| C ₀ | 215,000 N | dynamic load rating |
| M _{0x} | 1,899 Nm | static moment rating about X axis |
| M _{0y} | 4,255 Nm | static moment rating about Y axis |
| M _{0z} | 3,821 Nm | static moment rating about Z axis |
| ≈m | 3.07 kg | 重量 |



安装尺寸



| | | |
|-------------------------------|----------|--|
| A ₁ | 37.5 mm | Distance from locating edge on carriage to locating edge on guideway |
| J _B | 100 mm | |
| b | 45 mm | width rail |
| A ₂ | 10 mm | Distance from locating edge to hole |
| L ₁ | 104.2 mm | |
| L _S | 2.2 mm | |
| J _L | 80 mm | |
| J _{LZ} | 60 mm | |
| H ₁ | 8.5 mm | Free space, system dimension |
| H ₄ | 26 mm | |
| H ₅ | 8 mm | |
| T ₅ | 15 mm | Thread depth |
| T ₆ | 13.2 mm | |
| G ₂ | M12 | fixing screws below (DIN ISO 4762-12.9) |
| G ₂ M _A | 83 Nm | maximum tightening torque |
| K ₃ | M10 | fixing screws below (DIN ISO 4762-12.9) |
| K ₃ M _A | 83 Nm | maximum tightening torque |
| K ₆ | M10 | fixing screws below (DIN 7984-8.8) |
| K ₆ M _A | 48 Nm | maximum tightening torque |
| D ₂ | 10.6 mm | bore diameter |
| A ₃ | 6.6 mm | position lubrication connector |
| N ₃ | M6 | lubrication connector |
| t N ₃ | 6 mm | maximum permissible screw depth for lubrication connectors |
| A ₄ | 6.6 mm | position lubrication connector |
| N ₄ | 6 mm | lubrication connector |
| t N ₄ | 6 mm | maximum permissible screw depth for lubrication connectors |
| J _{L6} | 27 mm | position lubrication connector |
| N ₂ | 6 mm | max. diameter of lubrication hole in adjacent construction |
| J _{L5} | 15.7 mm | position lubrication connector |
| G _S | M4x4 | |
| O | 10x1,5 | O-Ring DIN 3771 |



在 medias 上檢視產品詳細資料

17.10.2024, 15:12:05 CST

SCHAEFFLER

