

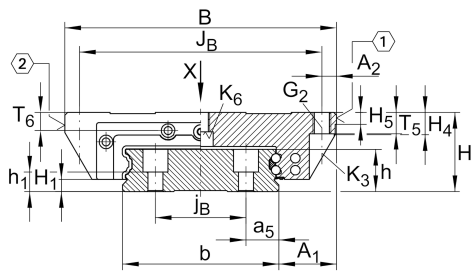


KWVE15-W [↗](#)

循环球轴承滑块

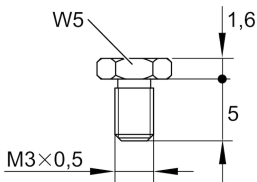
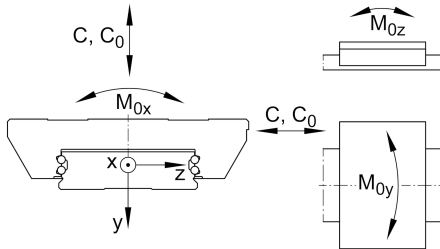
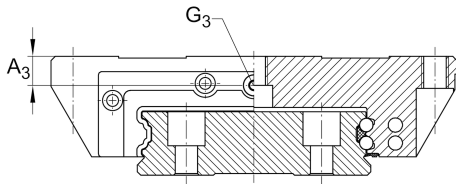
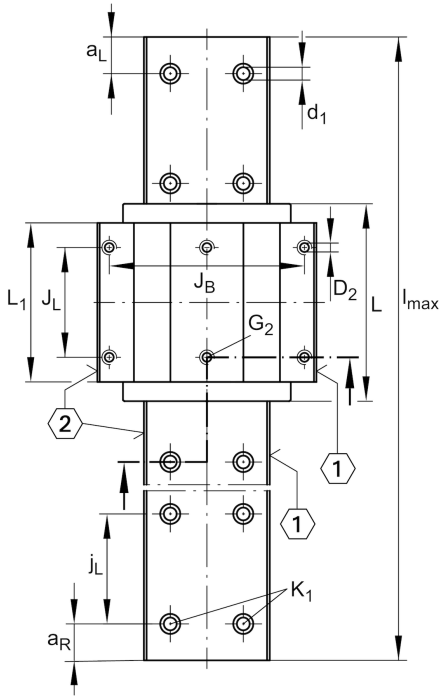
滑块 KWVE..-W, 用于直线循环滚珠轴承和导轨组件的宽滑块

技术信息



主要尺寸和性能数据

H	21 mm	height system
B	68 mm	width carriage
L	55.6 mm	overall length carriage
C	7,200 N	dynamic load rating
C ₀	14,500 N	static load rating
M _{0x}	332 Nm	static moment rating about X axis
M _{0y}	100 Nm	static moment rating about Y axis
M _{0z}	100 Nm	static moment rating about Z axis
≈m	0.27 kg	重量



S16

安装尺寸

A_1	15.5 mm	Distance from locating edge on carriage to locating edge on guideway
J_B	60 mm	
b	37 mm	width rail
A_2	4 mm	Distance from locating edge to hole
L_1	39.8 mm	
J_L	29 mm	
H_1	2.1 mm	Free space, system dimension
H_4	7.7 mm	
H_5	4.5 mm	
T_5	7 mm	Thread depth
T_6	4.8 mm	
G_2	M5	fixing screws above (DIN ISO 4762-12.9)
$G_2 M_A$	5.8 Nm	maximum tightening torque
K_3	M4	fixing screws below (DIN ISO 4762-12.9)
$K_3 M_A$	5 Nm	maximum tightening torque
K_6	M4	fixing screws below (DIN 7984-8.8)
$K_6 M_A$	2 Nm	maximum tightening torque
D_2	4.5 mm	
A_3	3.6 mm	position lubrication connector
G_3	M3	lubrication connector
$t G_3$	4 mm	maximum permissible screw depth for lubrication connectors

附加信息

VMKB_065	KWVE	Material name
----------	------	---------------