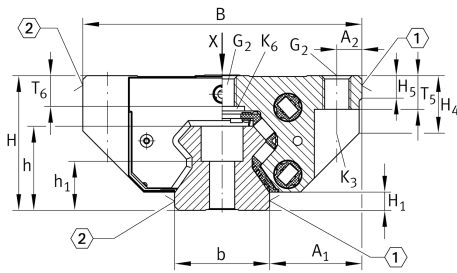


RWU45-F-L [↗](#)

循环滚子轴承滑块

带满装循环滚珠导引系统的标准滑块, 用于直线循环滚珠轴承和导轨组件, 用于油润滑或脂润滑

技术信息

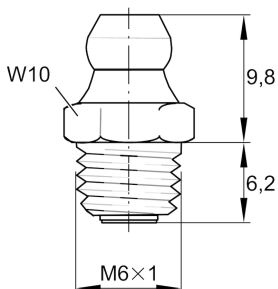
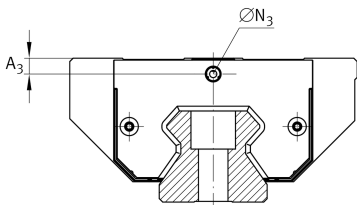
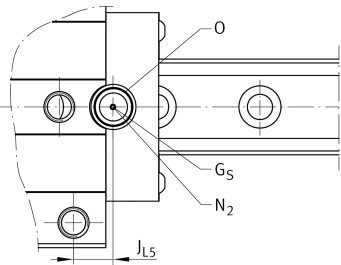
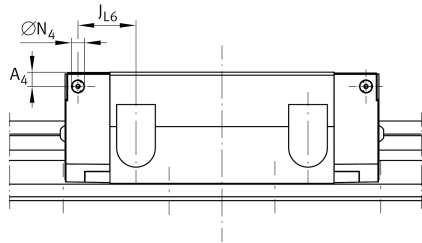
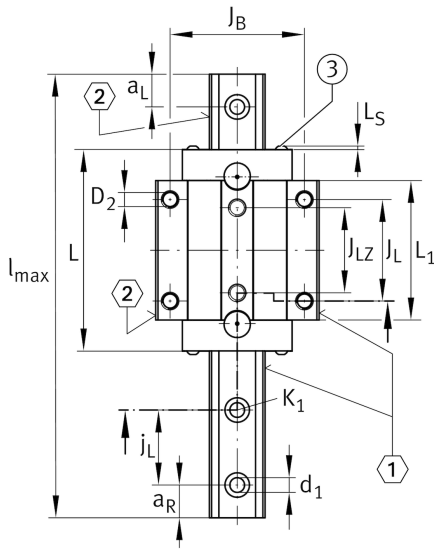


主要尺寸和性能数据

H	60 mm	height system
B	120 mm	width carriage
L	178.3 mm	overall length carriage
C	114,000 N	dynamic load rating
C ₀	285,000 N	dynamic load rating
M _{0x}	2,503 Nm	static moment rating about X axis
M _{0y}	7,263 Nm	static moment rating about Y axis
M _{0z}	6,536 Nm	static moment rating about Z axis
≈m	4.05 kg	重量



安装尺寸



A ₁	37.5 mm	Distance from locating edge on carriage to locating edge on guideway
J _B	100 mm	
b	45 mm	width rail
A ₂	10 mm	Distance from locating edge to hole
L ₁	136.6 mm	
L _S	2.2 mm	
J _L	80 mm	
J _{LZ}	60 mm	
H ₁	8.5 mm	Free space, system dimension
H ₄	26 mm	
H ₅	8 mm	
T ₅	15 mm	Thread depth
T ₆	13.2 mm	
G ₂	M12	fixing screws below (DIN ISO 4762-12.9)
G _{2 M_A}	83 Nm	maximum tightening torque
K ₃	M10	fixing screws below (DIN ISO 4762-12.9)
K _{3 M_A}	83 Nm	maximum tightening torque
K ₆	M10	fixing screws below (DIN 7984-8.8)
K _{6 M_A}	48 Nm	maximum tightening torque
D ₂	10.6 mm	bore diameter
A ₃	6.6 mm	position lubrication connector
N ₃	M6	lubrication connector
t N ₃	6 mm	maximum permissible screw depth for lubrication connectors
A ₄	6.6 mm	position lubrication connector
N ₄	6 mm	lubrication connector
t N ₄	6 mm	maximum permissible screw depth for lubrication connectors
J _{L6}	43.2 mm	position lubrication connector
N ₂	6 mm	max. diameter of lubrication hole in adjacent construction
J _{L5}	31.9 mm	position lubrication connector
G _S	M4x4	
O	10x1,5	O-Ring DIN 3771



在 medias 上檢視產品詳細資料

17.10.2024, 15:12:46 CST

SCHAEFFLER

