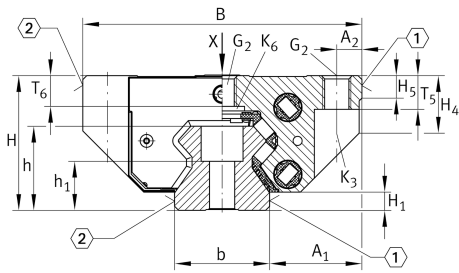


RWU65-F

循环滚子轴承滑块

带满装循环滚珠导引系统的标准滑块, 用于直线循环滚珠轴承和导轨组件, 用于油润滑或脂润滑

技术信息

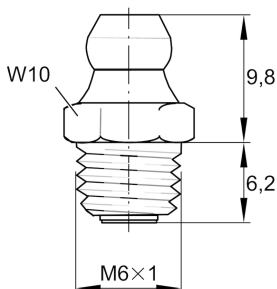
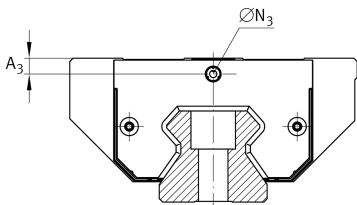
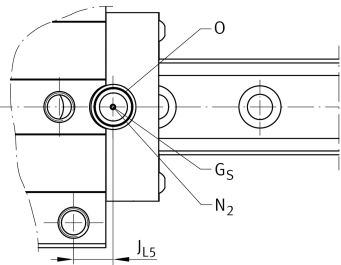
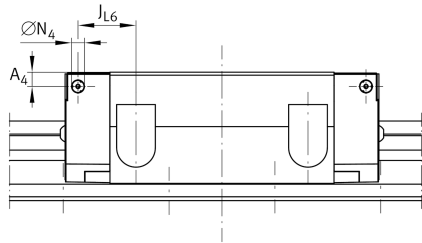
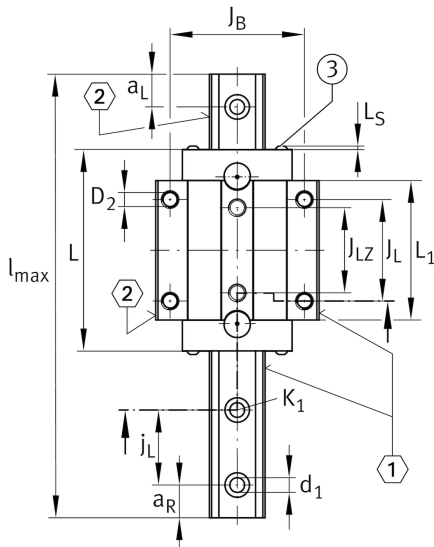


主要尺寸和性能数据

H	90 mm	height system
B	170 mm	width carriage
L	195.5 mm	overall length carriage
C	200,000 N	dynamic load rating
C ₀	440,000 N	dynamic load rating
M _{0x}	5,450 Nm	static moment rating about X axis
M _{0y}	12,100 Nm	static moment rating about Y axis
M _{0z}	10,900 Nm	static moment rating about Z axis
≈m	9.32 kg	重量



安装尺寸



A ₁	53.5 mm	Distance from locating edge on carriage to locating edge on guideway
J _B	142 mm	
b	63 mm	width rail
A ₂	14 mm	Distance from locating edge to hole
L ₁	141.2 mm	
L _S	2.75 mm	
J _L	110 mm	
J _{LZ}	82 mm	
H ₁	11.5 mm	Free space, system dimension
H ₄	39.2 mm	
H ₅	15 mm	
T ₅	23.3 mm	Thread depth
T ₆	23.3 mm	
G ₂	M16	fixing screws below (DIN ISO 4762-12.9)
G ₂ M _A	220 Nm	maximum tightening torque
K ₃	M14	fixing screws below (DIN ISO 4762-12.9)
K ₃ M _A	220 Nm	maximum tightening torque
K ₆	M14	fixing screws below (DIN 7984-8.8)
K ₆ M _A	130 Nm	maximum tightening torque
D ₂	14.5 mm	bore diameter
A ₃	19.6 mm	position lubrication connector
N ₃	M6	lubrication connector
t N ₃	6 mm	maximum permissible screw depth for lubrication connectors
A ₄	19.6 mm	position lubrication connector
N ₄	6 mm	lubrication connector
t N ₄	6 mm	maximum permissible screw depth for lubrication connectors
J _{L6}	34.8 mm	position lubrication connector
N ₂	6 mm	max. diameter of lubrication hole in adjacent construction
J _{L5}	15.6 mm	position lubrication connector
G _S	M4x4	
O	18x1,5	O-Ring DIN 3771



在 medias 上檢視產品詳細資料

17.10.2024, 15:22:10 CST

SCHAEFFLER

