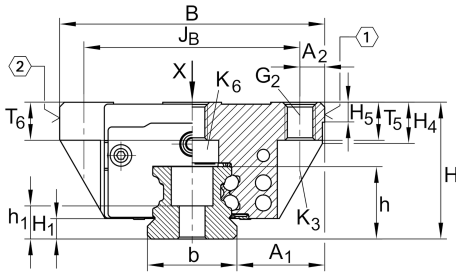


KWVE15-B [↗](#)

循环球轴承滑块

技术信息



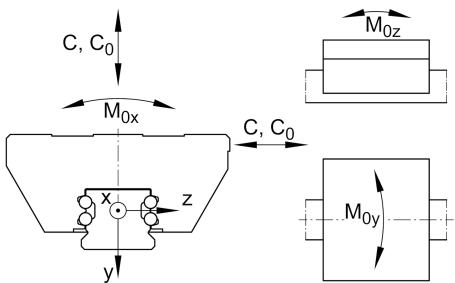
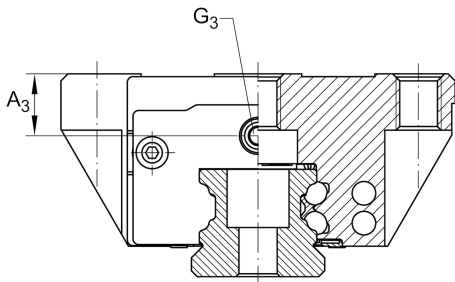
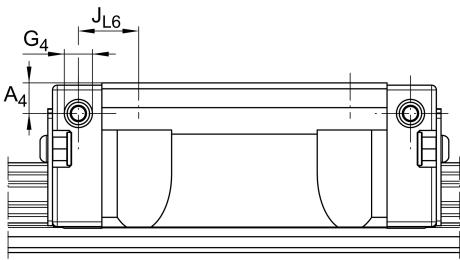
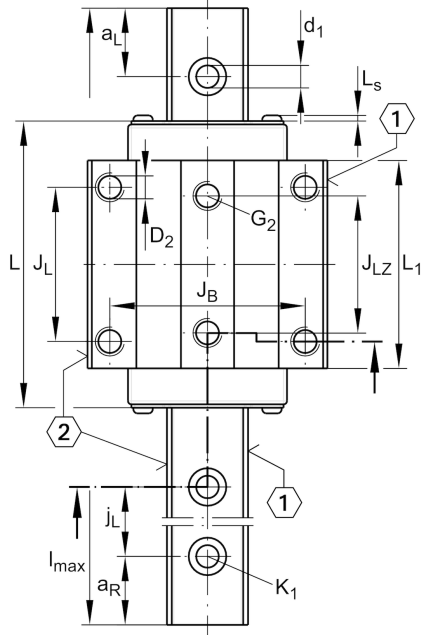
主要尺寸和性能数据

H	24 mm	height system
B	47 mm	width carriage
L	61.2 mm	overall length carriage
C	7,200 N	dynamic load rating
C ₀	14,500 N	static load rating
M _{0x}	150 Nm	static moment rating about X axis
M _{0y}	100 Nm	static moment rating about Y axis
M _{0z}	100 Nm	static moment rating about Z axis
≈m	0.2 kg	重量



安装尺寸

A_1	16 mm	Distance from locating edge on carriage to locating edge on guideway
J_B	38 mm	
b	15 mm	width rail
A_2	4.5 mm	Distance from locating edge to hole
L_1	39.8 mm	
L_S	1.3 mm	
J_L	30 mm	
J_{LZ}	26 mm	
H_1	4.3 mm	Free space, system dimension
H_4	7.6 mm	
H_5	4.75 mm	
T_5	7 mm	Thread depth
T_6	5.8 mm	
G_2	M5	fixing screws above (DIN ISO 4762-12.9)
$G_2 M_A$	5.8 Nm	maximum tightening torque
K_3	M4	fixing screws below (DIN ISO 4762-12.9)
$K_3 M_A$	5 Nm	maximum tightening torque
K_6	M4	fixing screws below (DIN 7984-8.8)
$K_6 M_A$	2 Nm	maximum tightening torque
D_2	4.5 mm	
A_3	4.3 mm	position lubrication connector
G_3	M3	lubrication connector
t_{G_3}	5.5 mm	maximum permissible screw depth for lubrication connectors
A_4	3.2 mm	position lubrication connector
G_4	M3	lubrication connector
t_{G_4}	5.5 mm	maximum permissible screw depth for lubrication connectors
J_{L6}	9.1 mm	position lubrication connector



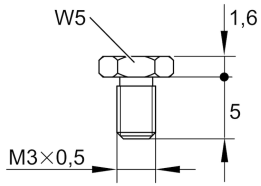


附加信息

VMKB_065

KWVE

Material name



S16