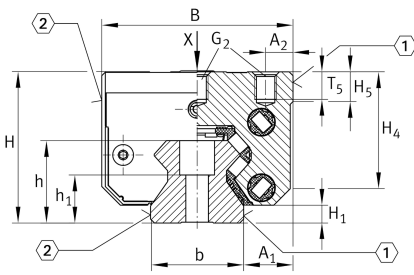


RWU45-F-HL [↗](#)

循环滚子轴承滑块

带满装循环滚珠导引系统的标准滑块, 用于直线循环滚珠轴承和导轨组件, 用于油润滑或脂润滑

技术信息

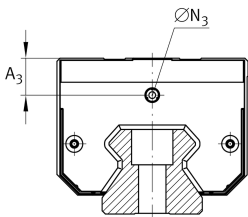
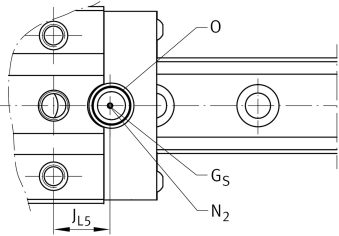
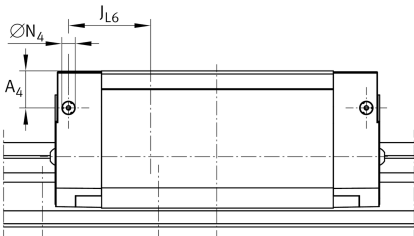
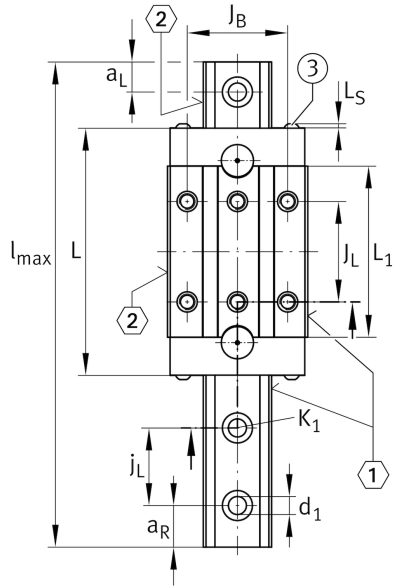


主要尺寸和性能数据

H	70 mm	height system
B	86 mm	width carriage
L	178.3 mm	overall length carriage
C	114,000 N	dynamic load rating
C ₀	285,000 N	dynamic load rating
M _{0x}	2,503 Nm	static moment rating about X axis
M _{0y}	7,263 Nm	static moment rating about Y axis
M _{0z}	6,536 Nm	static moment rating about Z axis
≈m	3.95 kg	重量



安装尺寸



A_1	20.5 mm	Distance from locating edge on carriage to locating edge on guideway
J_B	60 mm	
b	45 mm	width rail
A_2	13 mm	Distance from locating edge to hole
L_1	136.6 mm	
L_S	2.2 mm	
J_L	80 mm	
H_1	8.5 mm	Free space, system dimension
H_4	52.4 mm	
H_5	13.7 mm	
T_5	12.5 mm	Thread depth
G_2	M10	fixing screws below (DIN ISO 4762-12.9)
$G_2 M_A$	83 Nm	maximum tightening torque
A_3	16.6 mm	position lubrication connector
N_3	M6	lubrication connector
$t N_3$	6 mm	maximum permissible screw depth for lubrication connectors
A_4	16.6 mm	position lubrication connector
N_4	6 mm	lubrication connector
$t N_4$	6 mm	maximum permissible screw depth for lubrication connectors
J_{L6}	43.2 mm	position lubrication connector
N_2	6 mm	max. diameter of lubrication hole in adjacent construction
J_{L5}	31.9 mm	position lubrication connector
G_S	M4x4	
O	10x1,5	O-Ring DIN 3771

