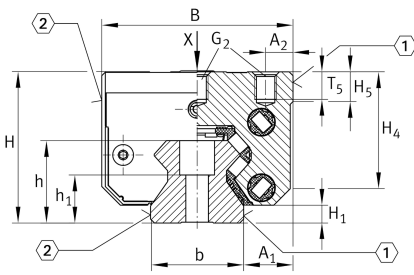


## RWU35-F-HL [↗](#)

### 循环滚子轴承滑块

带满装循环滚珠导引系统的标准滑块, 用于直线循环滚珠轴承和导轨组件, 用于油润滑或脂润滑

## 技术信息

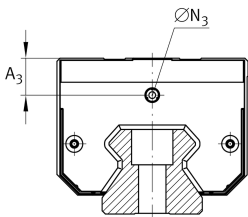
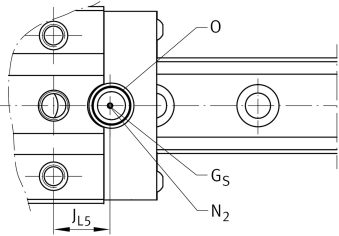
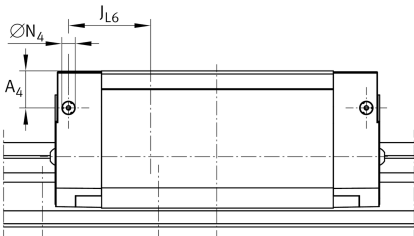
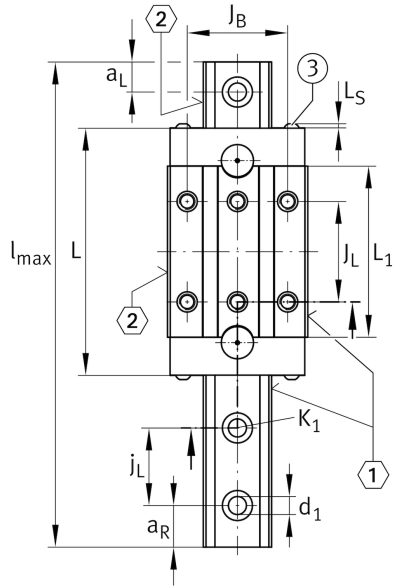


### 主要尺寸和性能数据

H	55 mm	height system
B	70 mm	width carriage
L	148.7 mm	overall length carriage
C	70,000 N	dynamic load rating
C <sub>0</sub>	175,000 N	dynamic load rating
M <sub>0x</sub>	1,500 Nm	static moment rating about X axis
M <sub>0y</sub>	3,350 Nm	static moment rating about Y axis
M <sub>0z</sub>	3,000 Nm	static moment rating about Z axis
≈m	2.14 kg	重量



安装尺寸



$A_1$	18 mm	Distance from locating edge on carriage to locating edge on guideway
$J_B$	50 mm	
$b$	34 mm	width rail
$A_2$	10 mm	Distance from locating edge to hole
$L_1$	111 mm	
$L_S$	2.2 mm	
$J_L$	72 mm	
$H_1$	6.5 mm	Free space, system dimension
$H_4$	41.9 mm	
$H_5$	10.8 mm	
$T_5$	10 mm	Thread depth
$G_2$	M8	fixing screws below (DIN ISO 4762-12.9)
$G_2 M_A$	41 Nm	maximum tightening torque
$A_3$	13.6 mm	position lubrication connector
$N_3$	M6	lubrication connector
$t N_3$	6 mm	maximum permissible screw depth for lubrication connectors
$A_4$	12.6 mm	position lubrication connector
$N_4$	6 mm	lubrication connector
$t N_4$	6 mm	maximum permissible screw depth for lubrication connectors
$J_{L6}$	32.4 mm	position lubrication connector
$N_2$	6 mm	max. diameter of lubrication hole in adjacent construction
$J_{L5}$	22.2 mm	position lubrication connector
$G_S$	M4x4	
$O$	10x1,5	O-Ring DIN 3771

