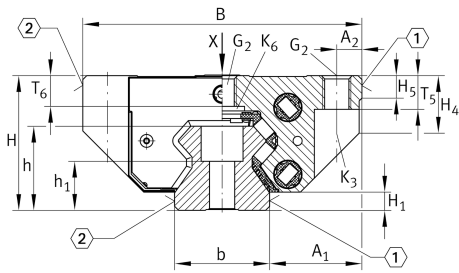


### RWU35-F

#### 循环滚子轴承滑块

带满装循环滚珠导引系统的标准滑块, 用于直线循环滚珠轴承和导轨组件, 用于油润滑或脂润滑

### 技术信息

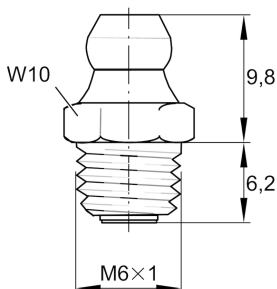
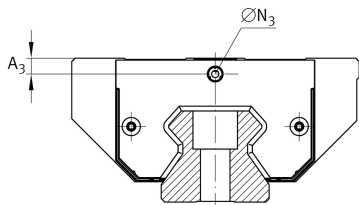
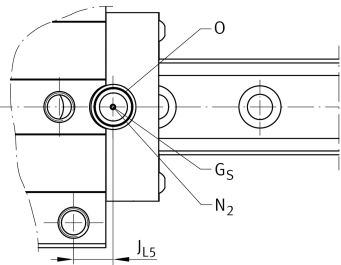
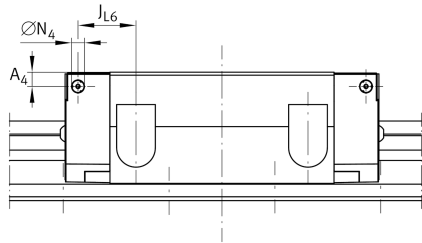
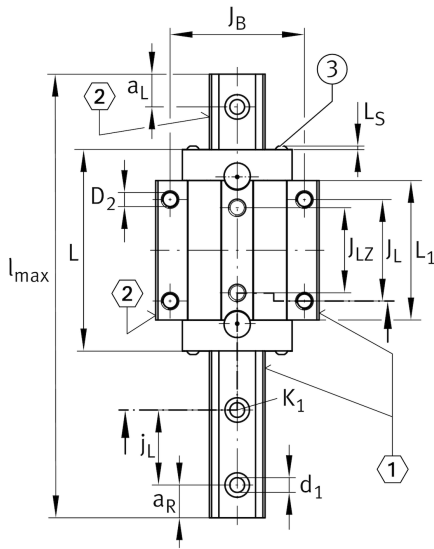


#### 主要尺寸和性能数据

H	48 mm	height system
B	100 mm	width carriage
L	122.9 mm	overall length carriage
C	59,000 N	dynamic load rating
C <sub>0</sub>	140,000 N	dynamic load rating
M <sub>0x</sub>	1,200 Nm	static moment rating about X axis
M <sub>0y</sub>	2,150 Nm	static moment rating about Y axis
M <sub>0z</sub>	1,950 Nm	static moment rating about Z axis
≈m	1.75 kg	重量



安装尺寸



A <sub>1</sub>	33 mm	Distance from locating edge on carriage to locating edge on guideway
J <sub>B</sub>	82 mm	
b	34 mm	width rail
A <sub>2</sub>	9 mm	Distance from locating edge to hole
L <sub>1</sub>	85.2 mm	
L <sub>S</sub>	2.2 mm	
J <sub>L</sub>	62 mm	
J <sub>LZ</sub>	52 mm	
H <sub>1</sub>	6.5 mm	Free space, system dimension
H <sub>4</sub>	20.5 mm	
H <sub>5</sub>	8 mm	
T <sub>5</sub>	12 mm	Thread depth
T <sub>6</sub>	10.9 mm	
G <sub>2</sub>	M10	fixing screws below (DIN ISO 4762-12.9)
G <sub>2</sub> M <sub>A</sub>	41 Nm	maximum tightening torque
K <sub>3</sub>	M8	fixing screws below (DIN ISO 4762-12.9)
K <sub>3</sub> M <sub>A</sub>	41 Nm	maximum tightening torque
K <sub>6</sub>	M8	fixing screws below (DIN 7984-8.8)
K <sub>6</sub> M <sub>A</sub>	24 Nm	maximum tightening torque
D <sub>2</sub>	8.6 mm	bore diameter
A <sub>3</sub>	6.6 mm	position lubrication connector
N <sub>3</sub>	M6	lubrication connector
t N <sub>3</sub>	6 mm	maximum permissible screw depth for lubrication connectors
A <sub>4</sub>	5.6 mm	position lubrication connector
N <sub>4</sub>	6 mm	lubrication connector
t N <sub>4</sub>	6 mm	maximum permissible screw depth for lubrication connectors
J <sub>L6</sub>	24.4 mm	position lubrication connector
N <sub>2</sub>	6 mm	max. diameter of lubrication hole in adjacent construction
J <sub>L5</sub>	14.3 mm	position lubrication connector
G <sub>S</sub>	M4x4	
O	10x1,5	O-Ring DIN 3771



在 medias 上檢視產品詳細資料

17.10.2024, 15:00:06 CST

SCHAEFFLER

