

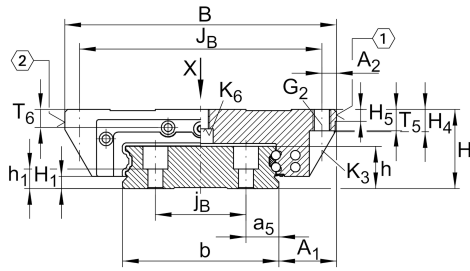


### KWVE20-W [↗](#)

#### 循环球轴承滑块

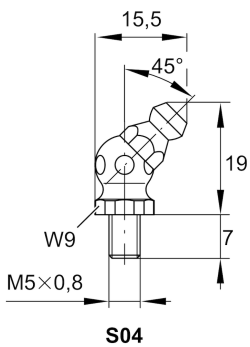
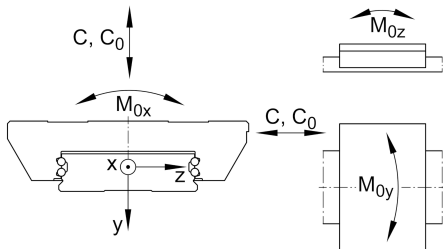
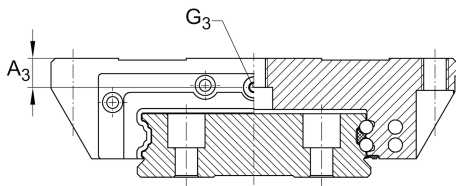
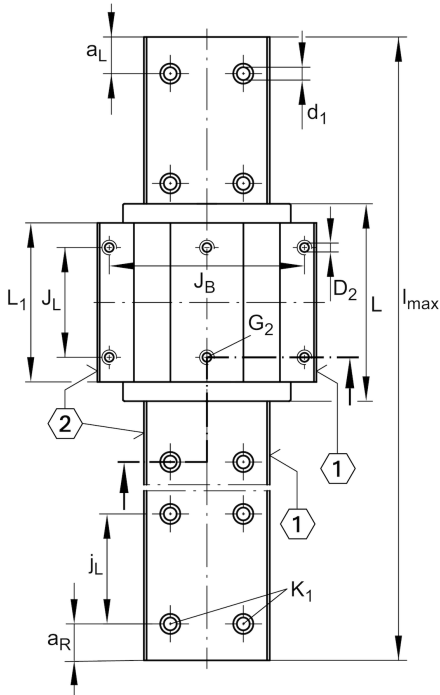
滑块 KWVE..-W, 用于直线循环滚珠轴承和导轨组件的宽滑块

### 技术信息



#### 主要尺寸和性能数据

H	27 mm	height system
B	80 mm	width carriage
L	69.8 mm	overall length carriage
C	13,100 N	dynamic load rating
C <sub>0</sub>	27,000 N	static load rating
M <sub>0x</sub>	687 Nm	static moment rating about X axis
M <sub>0y</sub>	240 Nm	static moment rating about Y axis
M <sub>0z</sub>	240 Nm	static moment rating about Z axis
≈m	0.5 kg	重量



**安装尺寸**

$A_1$	19 mm	Distance from locating edge on carriage to locating edge on guideway
$J_B$	70 mm	
$b$	42 mm	width rail
$A_2$	5 mm	Distance from locating edge to hole
$L_1$	50.4 mm	
$J_L$	40 mm	
$H_1$	4.6 mm	Free space, system dimension
$H_4$	10.6 mm	
$H_5$	5 mm	
$T_5$	10 mm	Thread depth
$T_6$	6 mm	
$G_2$	M6	fixing screws above (DIN ISO 4762-12.9)
$G_2 M_A$	10 Nm	maximum tightening torque
$K_3$	M5	fixing screws below (DIN ISO 4762-12.9)
$K_3 M_A$	10 Nm	maximum tightening torque
$K_6$	M6	fixing screws below (DIN ISO 4762-12.9)
$K_6 M_A$	17 Nm	maximum tightening torque
$D_2$	5.5 mm	
$A_3$	5 mm	position lubrication connector
$G_3$	M6	lubrication connector
$t G_3$	5 mm	maximum permissible screw depth for lubrication connectors

**附加信息**

VMKB_065	KWVE	Material name
----------	------	---------------