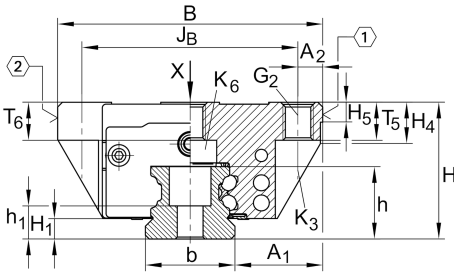


### KWVE25-B-N [↗](#)

循环球轴承滑块

滑块 KWVE..-B-N, 低型滑块, 四列

### 技术信息



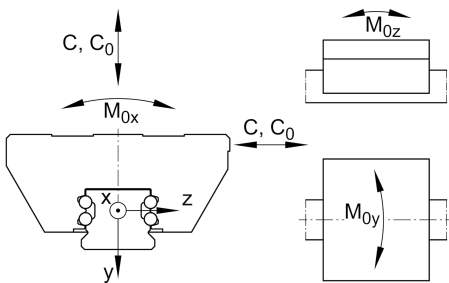
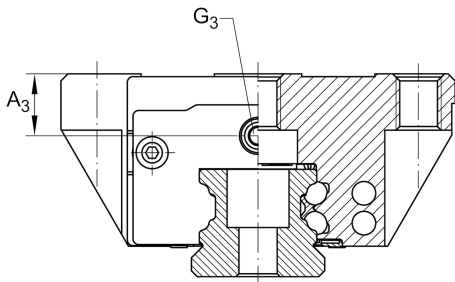
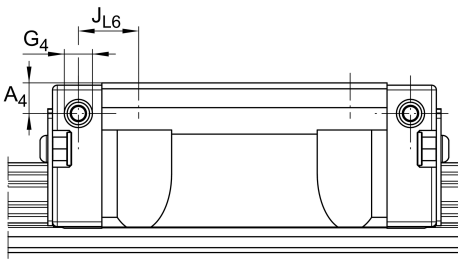
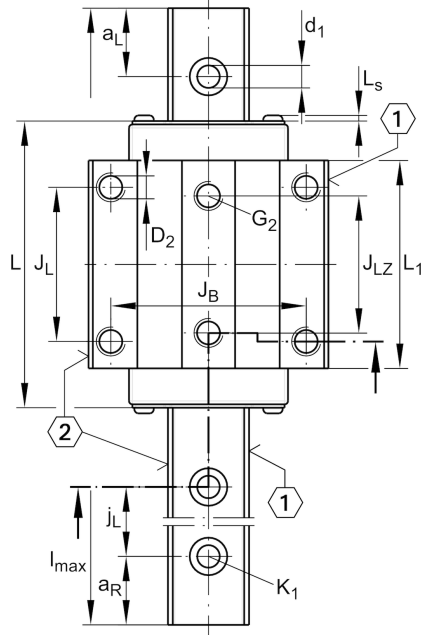
#### 主要尺寸和性能数据

H	31 mm	height system
B	70 mm	width carriage
L	83.3 mm	overall length carriage
C	17,900 N	dynamic load rating
C <sub>0</sub>	37,000 N	static load rating
M <sub>0x</sub>	510 Nm	static moment rating about X axis
M <sub>0y</sub>	395 Nm	static moment rating about Y axis
M <sub>0z</sub>	395 Nm	static moment rating about Z axis
≈m	0.56 kg	重量



安装尺寸

$A_1$	23.5 mm	Distance from locating edge on carriage to locating edge on guideway
$J_B$	57 mm	
$b$	23 mm	width rail
$A_2$	6.5 mm	Distance from locating edge to hole
$L_1$	60.7 mm	
$L_S$	1.65 mm	
$J_L$	45 mm	
$J_{LZ}$	40 mm	
$H_1$	5.1 mm	Free space, system dimension
$H_4$	9.3 mm	
$H_5$	5.25 mm	
$T_5$	10 mm	Thread depth
$T_6$	8 mm	
$G_2$	M8	fixing screws above (DIN ISO 4762-12.9)
$G_2 M_A$	24 Nm	maximum tightening torque
$K_3$	M6	fixing screws below (DIN ISO 4762-12.9)
$K_3 M_A$	17 Nm	maximum tightening torque
$K_6$	M6	fixing screws below (DIN 7984-8.8)
$K_6 M_A$	8 Nm	maximum tightening torque
$D_2$	6.7 mm	
$A_3$	6 mm	position lubrication connector
$G_3$	M6	lubrication connector
$t_{G_3}$	7 mm	maximum permissible screw depth for lubrication connectors
$A_4$	4 mm	position lubrication connector
$G_4$	M3	lubrication connector
$t_{G_4}$	6 mm	maximum permissible screw depth for lubrication connectors
$J_{L6}$	12.05 mm	position lubrication connector





附加信息

---

VMKB_065	KWVE	Material name
----------	------	---------------

