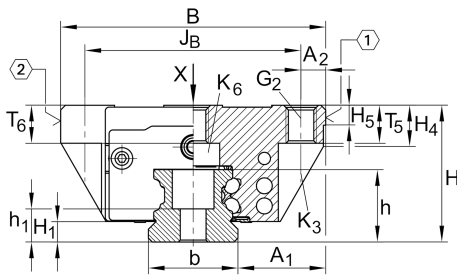


KWVE55-B-L [↗](#)

循环球轴承滑块

滑块 KWVE..-B-L, 长型滑块, 四列, 满装滚珠

技术信息



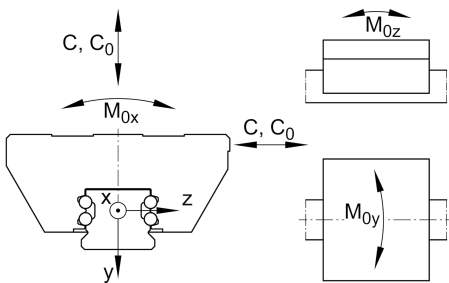
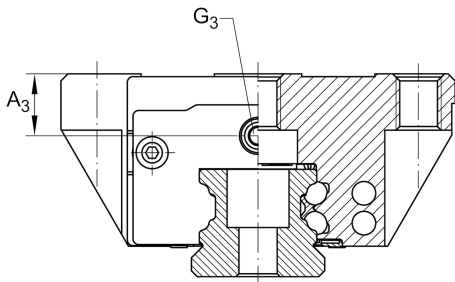
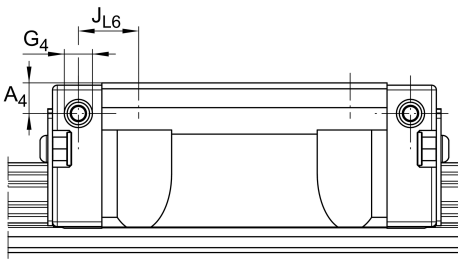
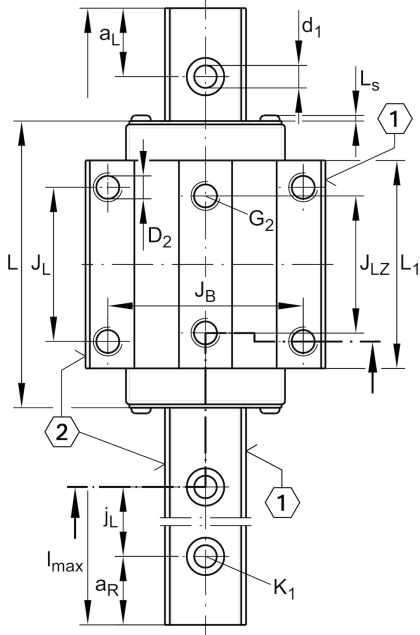
主要尺寸和性能数据

H	70 mm	height system
B	140 mm	width carriage
L	211.6 mm	overall length carriage
C	127,000 N	dynamic load rating
C ₀	285,000 N	static load rating
M _{0x}	7,500 Nm	static moment rating about X axis
M _{0y}	4,725 Nm	static moment rating about Y axis
M _{0z}	4,800 Nm	static moment rating about Z axis
≈m	6.6 kg	重量



安装尺寸

A_1	43.5 mm	Distance from locating edge on carriage to locating edge on guideway
J_B	116 mm	
b	53 mm	width rail
A_2	12 mm	Distance from locating edge to hole
L_1	170 mm	
L_S	2.2 mm	
J_L	95 mm	
J_{LZ}	70 mm	
H_1	13.5 mm	Free space, system dimension
H_4	22.7 mm	
H_5	11.25 mm	
T_5	21 mm	Thread depth
T_6	18 mm	
G_2	M14	fixing screws above (DIN ISO 4762-12.9)
$G_2 M_A$	140 Nm	maximum tightening torque
K_3	M12	fixing screws below (DIN ISO 4762-12.9)
$K_3 M_A$	140 Nm	maximum tightening torque
K_6	M12	fixing screws below (DIN ISO 4762-12.9)
$K_6 M_A$	140 Nm	maximum tightening torque
D_2	12.5 mm	
A_3	15 mm	position lubrication connector
G_3	M6	lubrication connector
t_{G_3}	7 mm	maximum permissible screw depth for lubrication connectors
A_4	15 mm	position lubrication connector
G_4	M6	lubrication connector
t_{G_4}	7 mm	maximum permissible screw depth for lubrication connectors
J_{L6}	49.5 mm	position lubrication connector





附加信息

VMKB_065	KWVE	Material name
----------	------	---------------

