

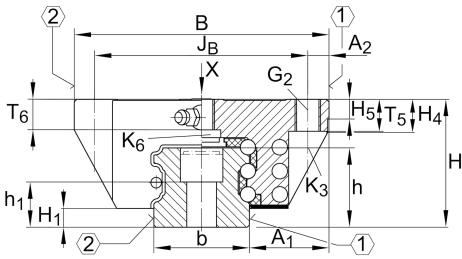
### KWSE20-L

循环球轴承滑块

六列直线循环滚珠轴承和导轨组件的长滑块

X-life

### 技术信息



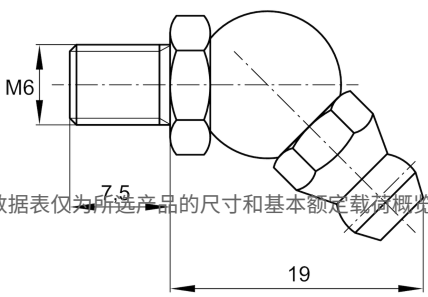
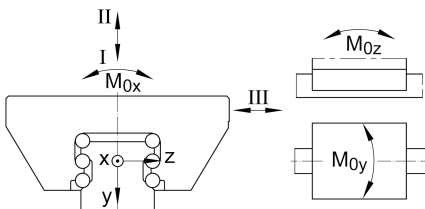
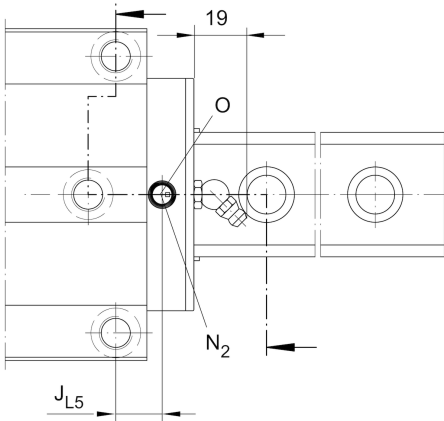
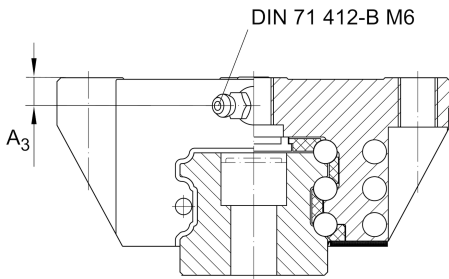
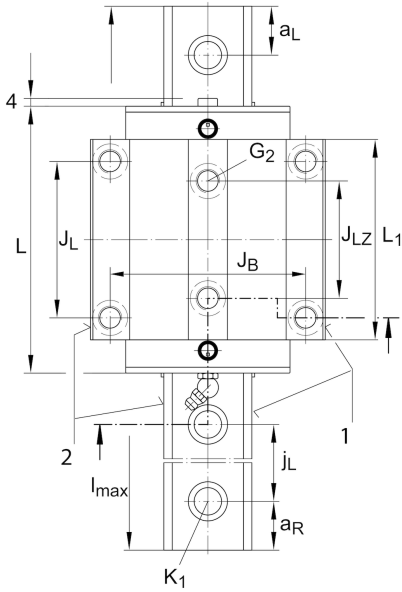
### 主要尺寸和性能数据

H	30 mm	height system
B	63 mm	width carriage
L	91.9 mm	overall length carriage
I C	28,000 N	dynamic load rating, load direction I: compressive load
I C <sub>0</sub>	72,000 N	static load rating, load direction I: compressive load
II C	25,000 N	dynamic load rating, load direction II: tensile load
II C <sub>0</sub>	47,000 N	static load rating, load direction II: tensile load
III C	26,000 N	dynamic load rating; basic dynamic load rating, Load direction III: lateral load
III C <sub>0</sub>	48,000 N	static load rating, Load direction III: lateral load
≈m	0.6 kg	重量



安装尺寸

$A_1$	21.5 mm	Distance from locating edge on carriage to locating edge on guideway
$J_B$	53 mm	
$b$	20 mm	width rail
$A_2$	5 mm	Distance from locating edge to hole
$L_1$	72.9 mm	
$J_L$	40 mm	
$J_{LZ}$	35 mm	
$H_1$	4.6 mm	Free space, system dimension
$H_4$	10.6 mm	
$H_5$	5 mm	
$T_5$	10 mm	Thread depth
$T_6$	7.2 mm	
$G_2$	M6	fixing screws below (DIN ISO 4762-12.9)
$G_2 M_A$	10 Nm	maximum tightening torque
$K_3$	M5	fixing screws below (DIN ISO 4762-12.9)
$K_3 M_A$	10 Nm	maximum tightening torque
$K_6$	M5	fixing screws below (DIN ISO 4762-12.9)
$K_6 M_A$	5.8 Nm	maximum tightening torque
$D_2$	5.5 mm	
$N_2$	3 mm	max. diameter of lubrication hole in adjacent construction
$J_{L5}$	20.19 mm	position lubrication connector
$A_3$	5.8 mm	position lubrication connector
$t_{A_3}$	7 mm	maximum permissible screw depth for lubrication connectors
$O$	3x1,5	O-Ring DIN 3771
$M_{0x}$	730 Nm	Moment
$M_{0y}$	640 Nm	Moment
$M_{0z}$	570 Nm	Moment





### 附加信息

---

VMKB\_065

KWSE

Material name