

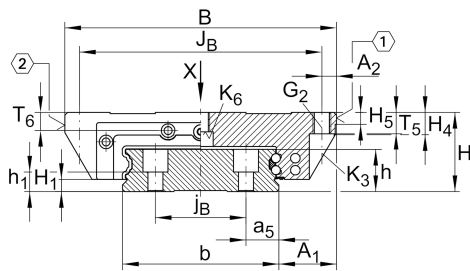


### KWVE35-WL [↗](#)

#### 循环球轴承滑块

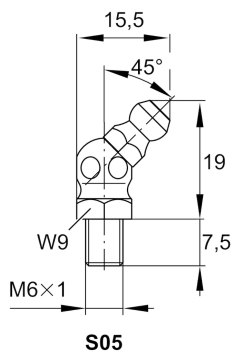
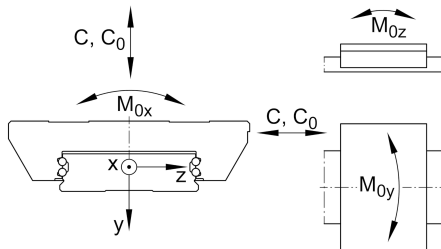
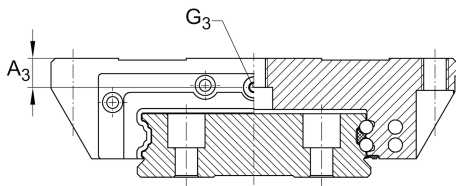
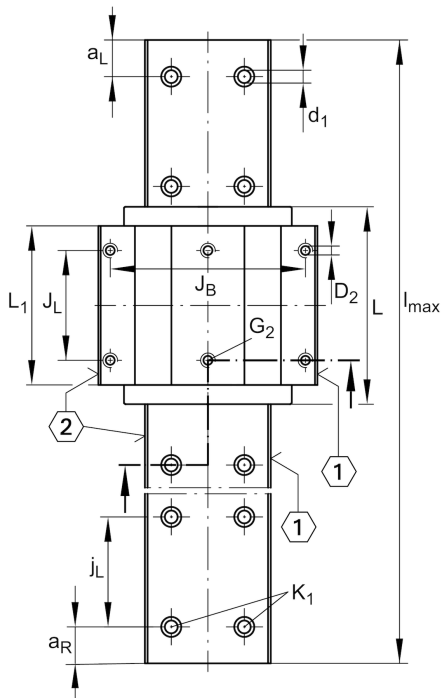
滑块 KWVE..-WL, 用于直线循环滚珠轴承和导轨组件的宽长型滑块

### 技术信息



#### 主要尺寸和性能数据

H	50 mm	height system
B	162 mm	width carriage
L	140.2 mm	overall length carriage
C	47,500 N	dynamic load rating
C <sub>0</sub>	100,000 N	static load rating
M <sub>0x</sub>	5,550 Nm	static moment rating about X axis
M <sub>0y</sub>	1,890 Nm	static moment rating about Y axis
M <sub>0z</sub>	1,890 Nm	static moment rating about Z axis
≈m	4.11 kg	重量



安装尺寸

$A_1$	36 mm	Distance from locating edge on carriage to locating edge on guideway
$J_B$	144 mm	
$b$	90 mm	width rail
$A_2$	9 mm	Distance from locating edge to hole
$L_1$	109.8 mm	
$J_L$	80 mm	
$H_1$	6.8 mm	Free space, system dimension
$H_4$	16.3 mm	
$H_5$	6.5 mm	
$T_5$	13 mm	Thread depth
$T_6$	13 mm	
$G_2$	M10	fixing screws above (DIN ISO 4762-12.9)
$G_2 M_A$	41 Nm	maximum tightening torque
$K_3$	M8	fixing screws below (DIN ISO 4762-12.9)
$K_3 M_A$	41 Nm	maximum tightening torque
$K_6$	M8	fixing screws below (DIN ISO 4762-12.9)
$K_6 M_A$	41 Nm	maximum tightening torque
$D_2$	8.6 mm	
$A_3$	14.3 mm	position lubrication connector
$G_3$	M6	lubrication connector
$t G_3$	6 mm	maximum permissible screw depth for lubrication connectors

附加信息

VMKB_065	KWVE	Material name
----------	------	---------------