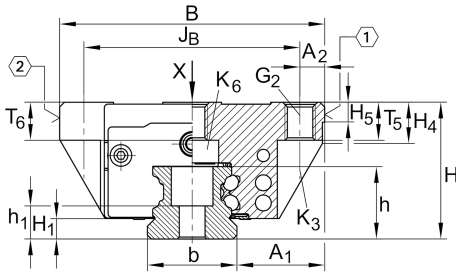


### KWVE45-B-N [↗](#)

循环球轴承滑块

滑块 KWVE...-B-N, 低型滑块, 四列

### 技术信息



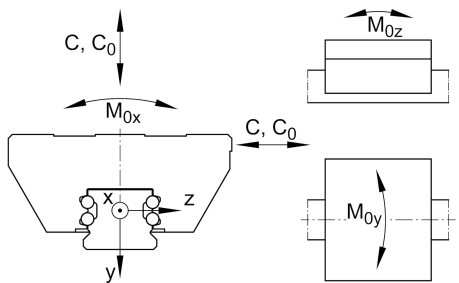
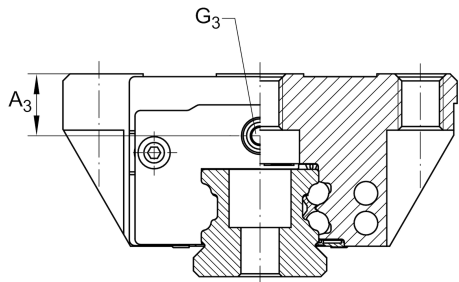
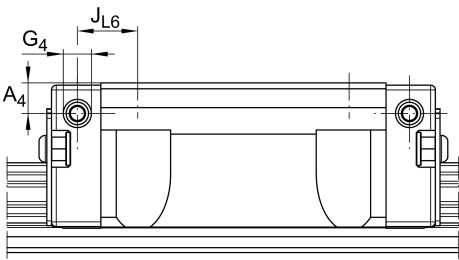
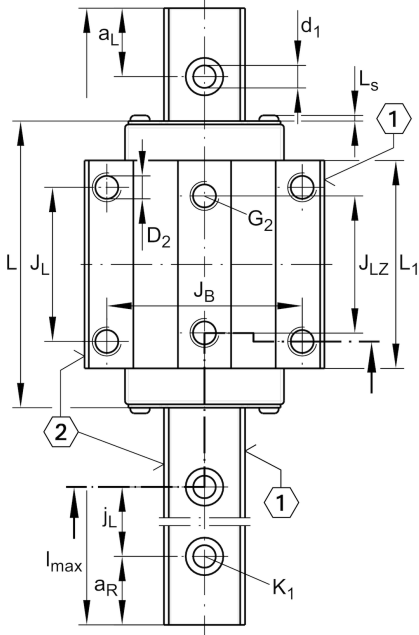
#### 主要尺寸和性能数据

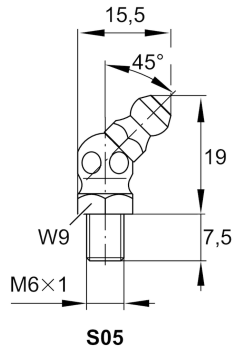
|                 |           |                                   |
|-----------------|-----------|-----------------------------------|
| H               | 52 mm     | height system                     |
| B               | 120 mm    | width carriage                    |
| L               | 140.6 mm  | overall length carriage           |
| C               | 69,000 N  | dynamic load rating               |
| C <sub>0</sub>  | 141,000 N | static load rating                |
| M <sub>0x</sub> | 3,610 Nm  | static moment rating about X axis |
| M <sub>0y</sub> | 2,485 Nm  | static moment rating about Y axis |
| M <sub>0z</sub> | 2,485 Nm  | static moment rating about Z axis |
| ≈m              | 2.72 kg   | 重量                                |



安装尺寸

|           |          |  |
|-----------|----------|--|
| $A_1$     | 37.5 mm  | Distance from locating edge on carriage to locating edge on guideway |
| $J_B$     | 100 mm   |  |
| $b$       | 45 mm    | width rail   |
| $A_2$     | 10 mm    | Distance from locating edge to hole                                  |
| $L_1$     | 102.5 mm |  |
| $L_S$     | 2.2 mm   |  |
| $J_L$     | 80 mm    |  |
| $J_{LZ}$  | 60 mm    |  |
| $H_1$     | 9.7 mm   | Free space, system dimension   |
| $H_4$     | 17.2 mm  |  |
| $H_5$     | 9.25 mm  |  |
| $T_5$     | 15 mm    | Thread depth   |
| $T_6$     | 11 mm    |  |
| $G_2$     | M12      | fixing screws above (DIN ISO 4762-12.9)                              |
| $G_2 M_A$ | 83 Nm    | maximum tightening torque  |
| $K_3$     | M10      | fixing screws below (DIN ISO 4762-12.9)                              |
| $K_3 M_A$ | 83 Nm    | maximum tightening torque  |
| $K_6$     | M10      | fixing screws below (DIN 7984-8.8)                                   |
| $K_6 M_A$ | 35 Nm    | maximum tightening torque  |
| $D_2$     | 10.6 mm  |  |
| $A_3$     | 8.5 mm   | position lubrication connector                                       |
| $G_3$     | M6       | lubrication connector  |
| $t_{G_3}$ | 7 mm     | maximum permissible screw depth for lubrication connectors           |
| $A_4$     | 8.5 mm   | position lubrication connector                                       |
| $G_4$     | M6       | lubrication connector  |
| $t_{G_4}$ | 7 mm     | maximum permissible screw depth for lubrication connectors           |
| $J_{L6}$  | 19.25 mm | position lubrication connector                                       |





### 附加信息

VMKB\_065

KWVE

Material name