

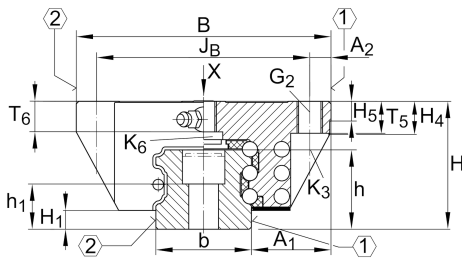
## KWSE20

循环球轴承滑块

六列直线循环滚珠轴承的标准滑块和导轨组件

X-life

### 技术信息



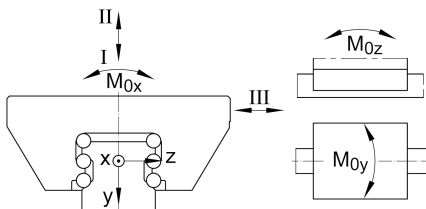
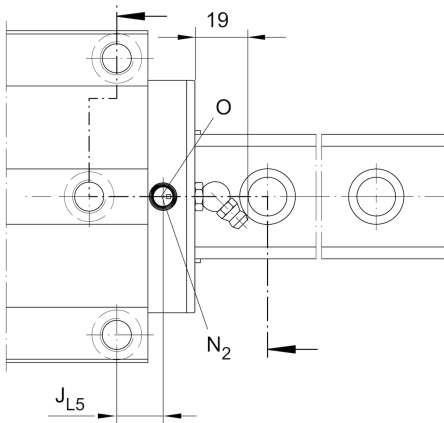
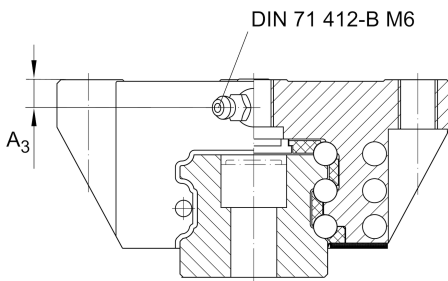
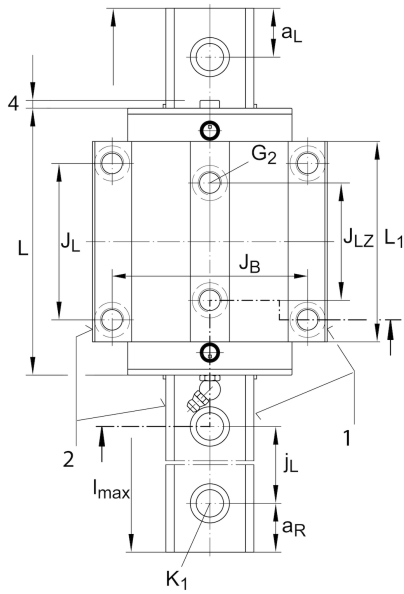
### 主要尺寸和性能数据

H	30 mm	height system
B	63 mm	width carriage
L	71.4 mm	overall length carriage
I C	22,000 N	dynamic load rating, load direction I: compressive load
I C <sub>0</sub>	52,000 N	static load rating, load direction I: compressive load
II C	21,300 N	dynamic load rating, load direction II: tensile load
II C <sub>0</sub>	35,300 N	static load rating, load direction II: tensile load
III C	21,000 N	dynamic load rating; basic dynamic load rating, Load direction III: lateral load
III C <sub>0</sub>	35,000 N	static load rating, Load direction III: lateral load
≈m	0.43 kg	重量



安装尺寸

$A_1$	21.5 mm	Distance from locating edge on carriage to locating edge on guideway
$J_B$	53 mm	
$b$	20 mm	width rail
$A_2$	5 mm	Distance from locating edge to hole
$L_1$	52.4 mm	
$J_L$	40 mm	
$J_{LZ}$	35 mm	
$H_1$	4.6 mm	Free space, system dimension
$H_4$	10.6 mm	
$H_5$	5 mm	
$T_5$	10 mm	Thread depth
$T_6$	7.2 mm	
$G_2$	M6	fixing screws below (DIN ISO 4762-12.9)
$G_2 M_A$	10 Nm	maximum tightening torque
$K_3$	M5	fixing screws below (DIN ISO 4762-12.9)
$K_3 M_A$	10 Nm	maximum tightening torque
$K_6$	M5	fixing screws below (DIN ISO 4762-12.9)
$D_2$	5.5 mm	
$N_2$	3 mm	max. diameter of lubrication hole in adjacent construction
$J_{L5}$	9.95 mm	position lubrication connector
$A_3$	5.8 mm	position lubrication connector
$t_{A_3}$	7 mm	maximum permissible screw depth for lubrication connectors
$M_{0x}$	530 Nm	Moment
$M_{0y}$	350 Nm	Moment
$M_{0z}$	305 Nm	Moment





### 附加信息

VMKB\_065

KWSE

Material name

