

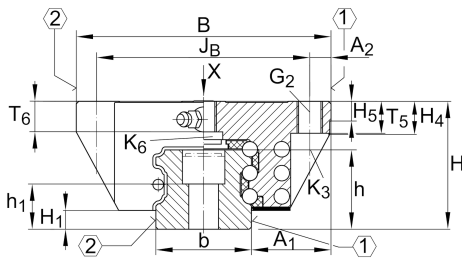
KWSE35-L

循环球轴承滑块

六列直线循环滚珠轴承和导轨组件的长滑块

X-life

技术信息



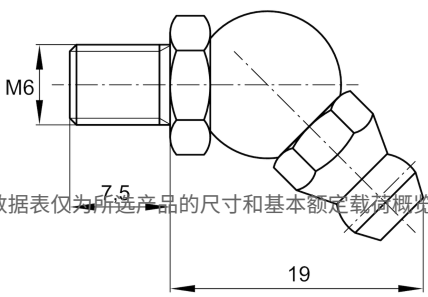
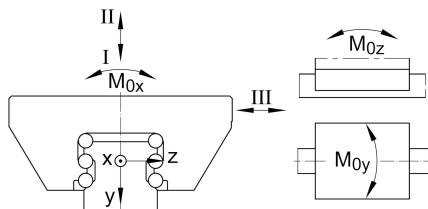
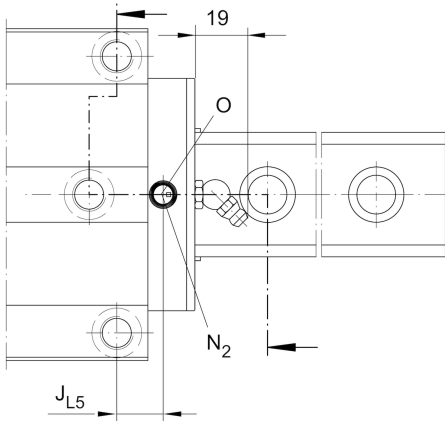
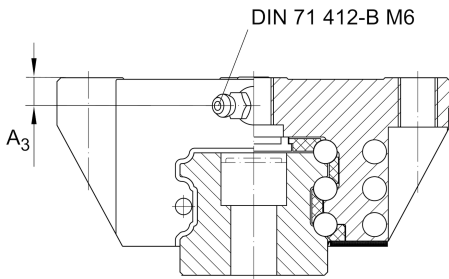
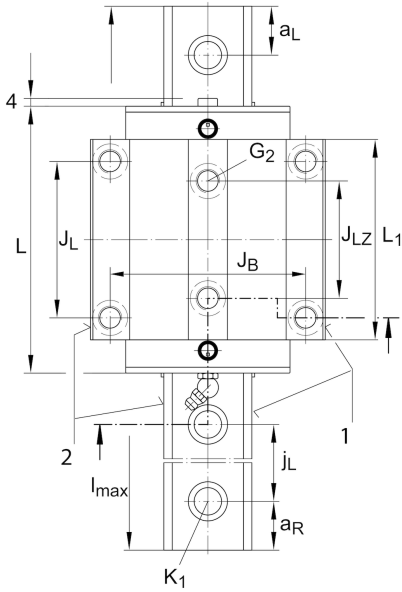
主要尺寸和性能数据

H	48 mm	height system
B	100 mm	width carriage
L	138.9 mm	overall length carriage
I C	70,000 N	dynamic load rating, load direction I: compressive load
I C ₀	145,000 N	static load rating, load direction I: compressive load
II C	67,500 N	dynamic load rating, load direction II: tensile load
II C ₀	119,000 N	static load rating, load direction II: tensile load
III C	71,000 N	dynamic load rating; basic dynamic load rating, Load direction III: lateral load
III C ₀	125,000 N	static load rating, Load direction III: lateral load
≈m	2.1 kg	重量



安装尺寸

A_1	33 mm	Distance from locating edge on carriage to locating edge on guideway
J_B	82 mm	
b	34 mm	width rail
A_2	9 mm	Distance from locating edge to hole
L_1	109.9 mm	
J_L	62 mm	
J_{LZ}	52 mm	
H_1	6.6 mm	Free space, system dimension
H_4	13.3 mm	
H_5	6.5 mm	
T_5	13 mm	Thread depth
T_6	12 mm	
G_2	M10	fixing screws below (DIN ISO 4762-12.9)
$G_2 M_A$	41 Nm	maximum tightening torque
K_3	M8	fixing screws below (DIN ISO 4762-12.9)
$K_3 M_A$	41 Nm	maximum tightening torque
K_6	M8	fixing screws below (DIN ISO 4762-12.9)
$K_6 M_A$	24 Nm	maximum tightening torque
D_2	8.6 mm	
N_2	4.5 mm	max. diameter of lubrication hole in adjacent construction
J_{L5}	27.75 mm	position lubrication connector
A_3	7.2 mm	position lubrication connector
t_{A_3}	7 mm	maximum permissible screw depth for lubrication connectors
O	4,5x1,5	O-Ring DIN 3771
M_{0x}	3,300 Nm	Moment
M_{0y}	2,480 Nm	Moment
M_{0z}	2,190 Nm	Moment





附加信息

VMKB_065

KWSE

Material name